

# MJ35-MJ40-MJ45-MJ50-Series Oil Disposal Kit

For Kits: 8262118, 8262119, 8262120, 8262121

Follow these instructions to install a rear oil disposal kit on a MJ35, MJ40, MJ45 or MJ50-series fryer.

**Kit is installed on far-right vat as viewed from front of fryer.**

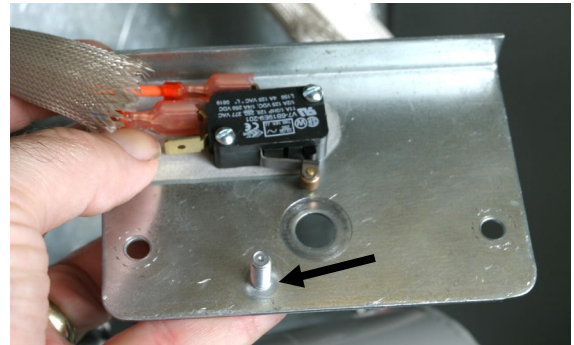
Part #	In Kits 826-2118, 2119, 2120, 2121	Qty
8022365	Label	1
8130022	Nipple, 1/2" x Close NPT	2
8130099	7" nipple	1
8130062	Elbow 1/2" X 90°	3
8130597	11.5" nipple	1
8130003	1/2" Tee	1
8130640	1/2" Plug	1
8130352	21.5 Nipple	1
8100487	Male QD	1
8069178	Oil Disposal Hose Assembly	1
8196105	Instructions	1
1065246	Harness, Heater tape	1
*	Heater tape strip	1
8110746	Tape	

\* Heater tape part number and voltage varies with kits: 826-2118 gets 806-8065; 826-2119 gets 806-5933; 826-2120 gets 8065934; 826-2121 gets 806-6733.

1. Drain far right vat.
2. Remove power from the fryer and pull fryer from hood to gain access to the back.
3. Remove drain switch wire and label. **See figure 1.**
4. Remove the outer return valve shield, return handle and return switch assembly. **See figure 2.**
5. Press the stop pin from the return switch bracket. **See figure 2.**
6. Remove the plug in the three-way valve; remove front flush return line (if equipped). **See figure 3.**



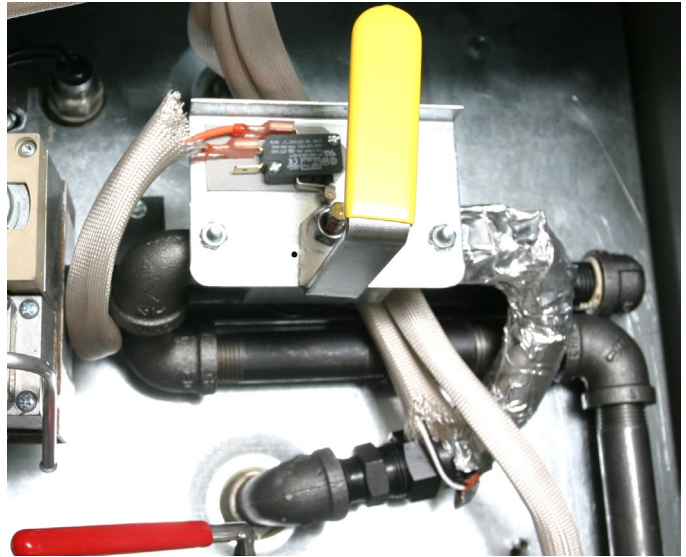
**Figure 1:** The wires are shown removed from the drain microswitch.



**Figure 2:** The return valve is shown removed. The stop pin (see arrow) must be pressed from the plate to allow 180° movement of the valve handle.

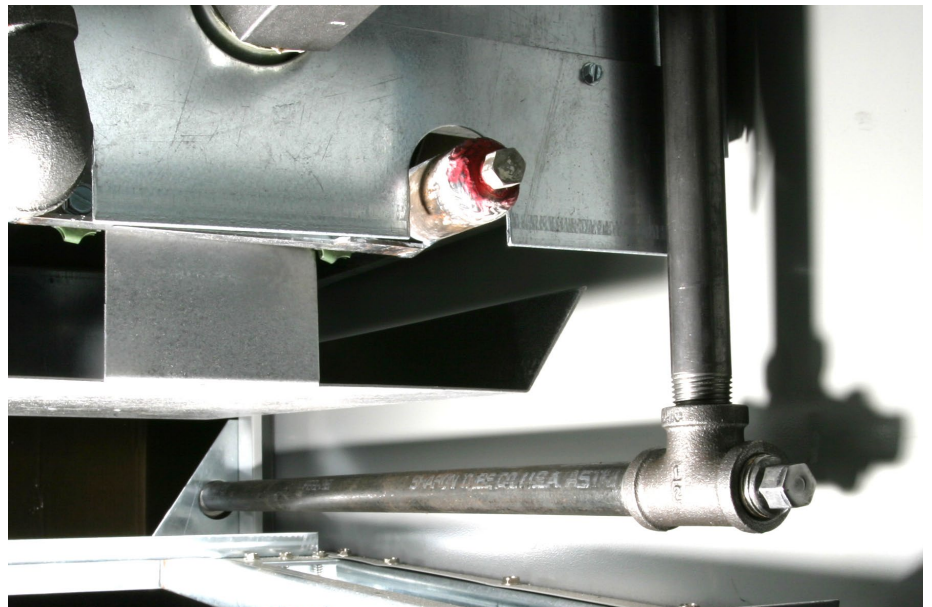


**Figure 3:** The front flush hose is shown disconnected.



**Figure 4:** The plumbing for the rear discharge system is shown in place. The valve bracket, with the stop pin removed, allows 180° rotation of the handle, allowing for a return and discharge position.

7. Install new plumbing lines, routing the line to the rear of the fryer. **See figures 3, 4, 5 and 6.**
8. Place the provided label for the discharge/return handle on the valve shield.
9. Reposition the shield over the discharge valve.
10. Attach the provided hose between the fryer's quick disconnect and the oil disposal quick-disconnect.
11. Route the leads from the heater tape to the transformer box at the right rear of the fryer.
12. Remove the pins from 1 and 3, which carry 120V AC for the heater tape, on the 9-pin plug in the transformer box.

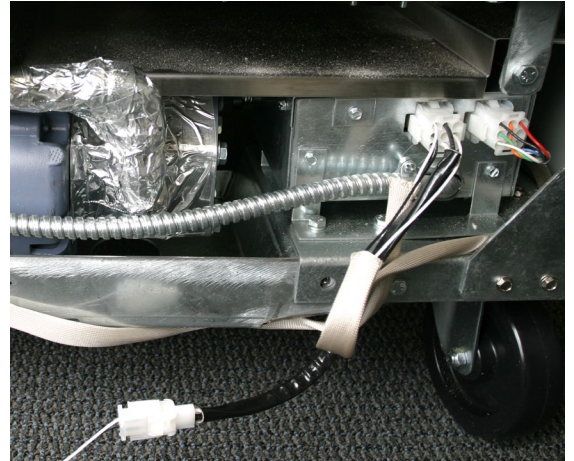


**Figure 5:** New rear discharge piping is shown in the bottom right side (as viewed from the front) of the cabinet. The discharge pipe exits the cabinet through an existing gusset. Heater tape is added to the horizontal pipe.

13. Insert the pins on harness 106-5246 into pins 1 and 3 on the 9-pin plug on the transformer box. The harness has a 4-pin plug, which will be used to provide power to the existing heater strips and the added strip. **See figure 7.**
14. Insert the removed pins into pins 1 and 3 on the 4-pin plug.
15. Insert the leads from the added heater tape on pins 2 and 4.
16. Reposition and test the fryer.



**Figure 6:** The new rear-discharge plumbing is shown extending through an existing cabinet gusset. The quick-disconnect is in place.



**Figure 7:** The wiring harness provided to connect the additional heating tape is shown in place.

## Rear Discharge Instructions

1. Ensure the filter pan is clean and prepared for filtration. Prepare the filter pan if necessary.
2. With the oil at operating temperature, turn the fryer off. Wear protective clothing and use caution. Hot oil can cause serious injuries.
3. Drain the oil into the filter pan by opening the drain valve. **Drain only one vat at a time.** Close the drain valve. Ensure all drain valves are closed.
4. Ensure the oil disposal reservoir is not full and the fryer is properly connected to the oil disposal system.
5. Rotate the filter valve handle to the Oil Disposal position. The oil will be pumped from the filter pan to the oil disposal reservoir.
6. Return the filter handle to the upright OFF position when the filter pan empties.
7. Repeat steps for other fry vats as necessary.
8. Refill fryer with fresh oil.